

## U-22 “Sabinus” (‘Cabbage’) Class

The U-22 (codenamed ‘Cabbage’ by the UESN) entered service in 2156, and was one of the most commonly encountered Romulan Cruisers during the war. The design allowed fleet advances across interstellar distance. They were equipped with a formidable arsenal of cluster missiles and Star Bombs, and also mounted the most powerful plasma weapon yet produced, and carry it for distances further than any other Romulan Cruiser save for the U-13A.

However, this massive capability came at a price; the amount of deuterium fuel required by the fusion reactors to give the required range meant that the ships weighed an estimated 500,000mt. Delays in the program caused the abandonment of plans to use the twin-engine system developed for the U-20, and instead a modified version of the long serving RFTL-3 in a triple nacelle arrangement was adopted. The massive mass of this class badly affected its manoeuvrability and performance at warp (3.0 emergency speeds).

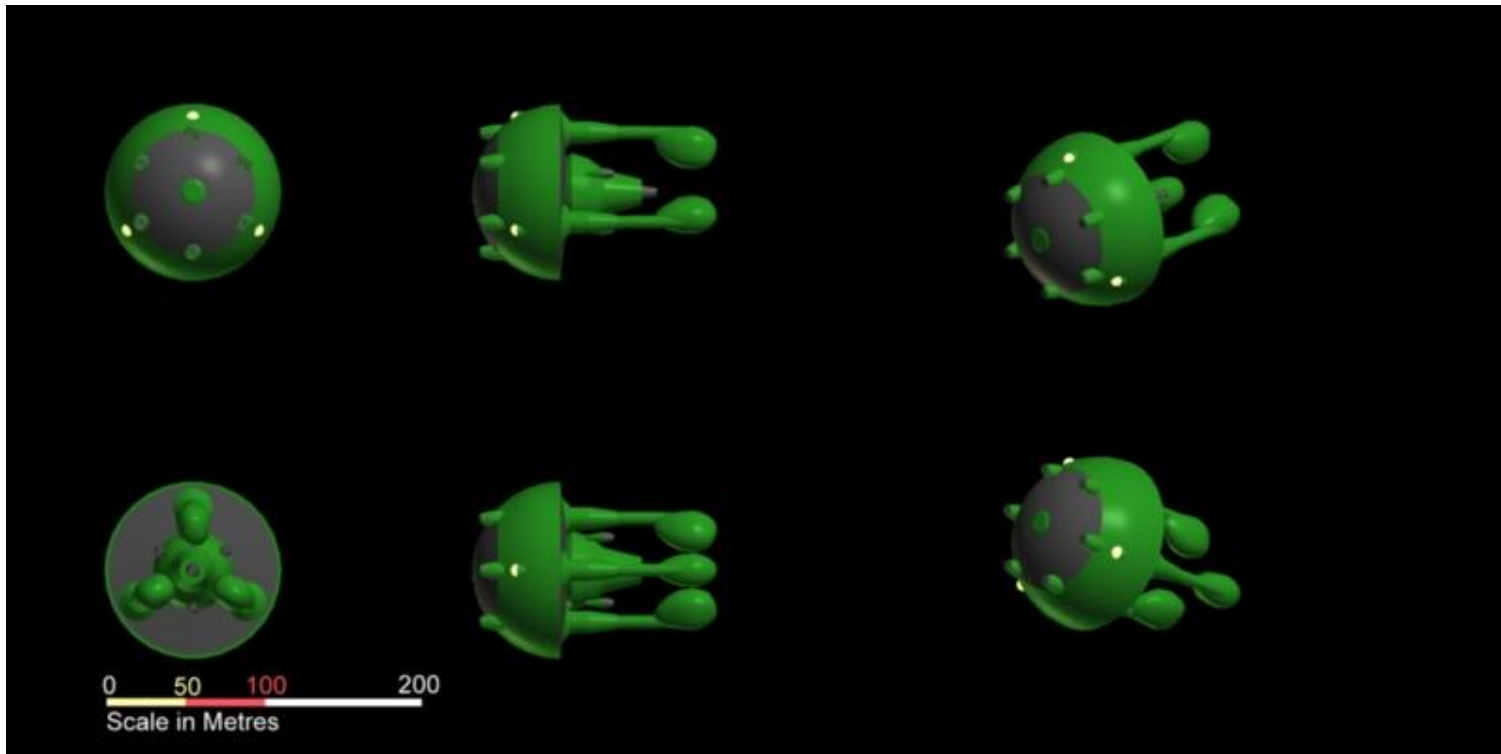
Early in the War the U-22 was used to great effect, the firepower overwhelming many Earth Alliance ships, and the sheer size of the vessel meant that the damage inflicted on the U-22 was easily absorbed. Later in the war as newer designs entered service with Earth and its allies, the slow ponderous U-22s became easy prey. The battle of Hell’s Gate on 21-23 October 2157 demonstrated the vulnerability of the U-22. This battle saw the Earth Alliance forces crush a massive Romulan Invasion attempt. 27 U-22 Cruisers were committed to this battle, and not even one survived, it is estimated that the Romulan loss of life in this battle was in excess of 30,000 crew and troops.

The cruiser was designated as the U-22A, at the start of the war some 75 U-22As were in service, and these were joined by a further 30 built during the war. Numerous variants of the U-22 also served during the war; despite the change in roles, they retained the U-22 designation. The U-22B (Codename ‘Tonsil’) was a tanker built to support long-range U-22A operations, production totalled 15. Armament was reduced to just the defensive cluster missiles.

U-22C (Codename ‘Rodent’) was used as a subspace sensor/communications ship, often deployed on long intelligence gathering sorties. This class retained the plasma cannon and cluster missile, but dispensed with the star bombs to allow for the fitment of advanced sensor equipment. Construction of these specialist intelligence ships was just 10. U-22D (Codename ‘Syrup’) was a specialist troop transport/assault ship; it could carry some 2000 troops. The weapons fit dispensed with the plasma weapon, but retained a full missile arsenal for self-defence and planetary assault, this model also had much enlarged shuttle bays befitting the mission. The U-22D was the second most common variant, with some 35 seeing service. The U-22E was an advanced version of the Cabbage, mounting heavier weapons. As newer smaller cruisers were proving more efficient and flexible production was very limited.

The U-22 suffered from the compromise made in its design. Romulan fusion engine technology meant that the only way to gain a relatively long range was to carry massive amounts of deuterium fuel; this fuel meant that the ship’s power efficiency and speed would always be inferior to ships built for speed and manoeuvrability, especially when those ships also used matter/antimatter propulsion.

## U-22 “Sabinus” (‘Cabbage’) Class



Star Trek is © Paramount Pictures Corporation

The majority of Romulan War Historical Data and Ship Designations are based on Material published by FASA Corporation

Additional Romulan Historical Data and Ship Designations based on Material produced by and available at [www.starfleet-museum.org](http://www.starfleet-museum.org) and [www.st-minutiae.com](http://www.st-minutiae.com)

Design of U-22, U-24 and U-25 Cruisers and class histories from [www.starfleet-museum.org](http://www.starfleet-museum.org)

## Romulan Intelligence Briefing – Volume 1 – Ships of the Romulan War

### U-22 “Sabinus” (‘Cabbage’) Class

<b>Classification:</b>	CB	TANKER	COMMS	ASSAULT	CB
<b>Class:</b>	18	18 (LADEN)	18	18	18
<b>Model:</b>	U-22A	U-22B	U-22C	U-22D	U-22E
<b>Class Commission Date:</b>	2156	2156	2156	2156	2159
<b>Number Proposed:</b>					
Constructed:	105	15	10	24	5
Lost:					
Destroyed:					
Scrapped:					
Training:					
Captured:					
Sold:					
<b>Superstructure:</b>	44	20	44	38	48
<b>Damage Chart:</b>	C	C	C	C	C
<b>Dimensions:</b>					
Length:	157.44m	157.44m	157.44m	157.44m	157.44m
Width:	112.95m	112.95m	112.95m	112.95m	112.95m
Height:	112.95m	112.95m	112.95m	112.95m	112.95m
<b>Displacement:</b>	482900 mt	411400 mt	452900 mt	468400 mt	493900 mt
<b>Cargo Specs</b>					
Total SCU:	331 SCU	1772 SCU	308 SCU	738 SCU	335 SCU
Cargo Capacity:	16570 mt	88580 mt	15390 mt	36900 mt	16770 mt
<b>Computer Type:</b>	R5L	R5L	R5L	R5L	R5L
<b>Landing Capacity:</b>	N	N	N	N	N
<b>Cloaking Device:</b>					
Power to Engage:					
<b>Transporters-</b>					
6-person:					
20-person Combat:					
22-person Emergency:					
cargo:					
<b>Laboratories:</b>					
<b>Brigs:</b>					
<b>Replicators:</b>					
<b>Shuttlecraft-</b>					
Light Shuttle:	4	4	4	4	4
Standard Shuttle:					
Heavy Shuttle:				12	
Cargo Shuttle:		12		4	
Medical Shuttle:				2	
Combat Shuttle:				12	
<b>Ships Complement:</b>	1000	409	928	2986	1012
Officers:	200	82	186	197	202
Enlisted:	800	327	742	789	810
Troops:				2000	
Passengers:	5	5	5	5	5

<b>ENGINEERING-</b>					
<b>Total Power Available:</b>	36	36	36	36	36
<b>Movement Point Ratio:</b>	9/1	9/1	9/1	9/1	9/1
<b>Warp Engine Type:</b>	RFTL-8B	RFTL-8B	RFTL-8B	RFTL-8B	RFTL-8B
Number:	3	3	3	3	3
Power Units:	10	10	10	10	10
Stress Chart:					
Optimum Speed:	1.80	1.8	2	1.8	1.8
Max Safe Cruising:	2.40	2.4	2.4	2.4	2.4
Emergency Speed:	2.70	2.70	2.70	2.70	2.70
Maximum Speed:	3.00	3.00	3.00	3.00	3.00
<b>Impulse Engine Type:</b>	RNSP-5B	RNSP-5	RNSP-5	RNSP-5	RNSP-5
Power Units:	6	6	6	6	6
<b>WEAPONS/DEFENSE</b>					
<b>Drill Beam Weapon Type:</b>					
Firing Arcs:					
Firing Chart:					
Maximum Power:					
Damage Modifiers					
+1					
<b>Star bomb Missile Type:</b>	RM-SB1			RM-SB1	RM-SB1
Firing Arcs:	6F			6F	7F
Firing Chart:	A			A	A
Power To Arm:	5			5	5
Damage	12			12	12
Stock:	6.00			6.00	7.00
<b>Cluster Missile Type:</b>	RM-CM3	RM-CM3	RM-CM3	RM-CM3	RM-CM4
Firing Arcs:	2F	2F	2F	2F	2F
Firing Chart:	C	C	C	C	C
Power To Arm:	4	4	4	4	4
Damage:	RC-5	RC-5	RC-5	RC-5	RC-1
Stock:	10	10	10	10	10
<b>Plasma Weapon Type:</b>	RPC-2		RPC-2		RPC-2
Firing Arcs:	1F		1F		1F
Firing Chart:	C		C		C
Power To Arm:	6		6		6
Damage:	RC-1		RC-1		RC-1
Stock:	UNLIMITED		UNLIMITED		UNLIMITED
<b>Shields-</b>					
Shield Type:	RDS-5	RDS-5	RDS-5	RDS-5	RDS-5
Shield Point Ratio:	2/1	2/1	2/1	2/1	2/1
Maximum Shield:	2	2	2	2	2
<b>Combat Efficiency</b>	8.9	0.9	3.1	6.6	11.1
D-	68.9	34.6	68.9	60.3	74.6
WDF-	12.9	2.6	4.5	11.0	14.9